



Naomi Street, London, SE8 5EX

Immaculately presented penthouse apartment located in ever so popular Greenland Place. The property comprises of a spacious living room leading into the private balcony featuring tremendous views of the Canary Wharf Skyline, a contemporary kitchen with all mod cons, a generous double bedroom with a bespoke built-in wardrobe, and a stylish bathroom. The apartment also benefits from three spacious cupboards with plenty of storage space. Just a few steps down from their front doors, without leaving the building, residents can enjoy a state of art fitness facility alongside a 24 hr concierge, a large shared landscaped garden, as well as a roof terrace.

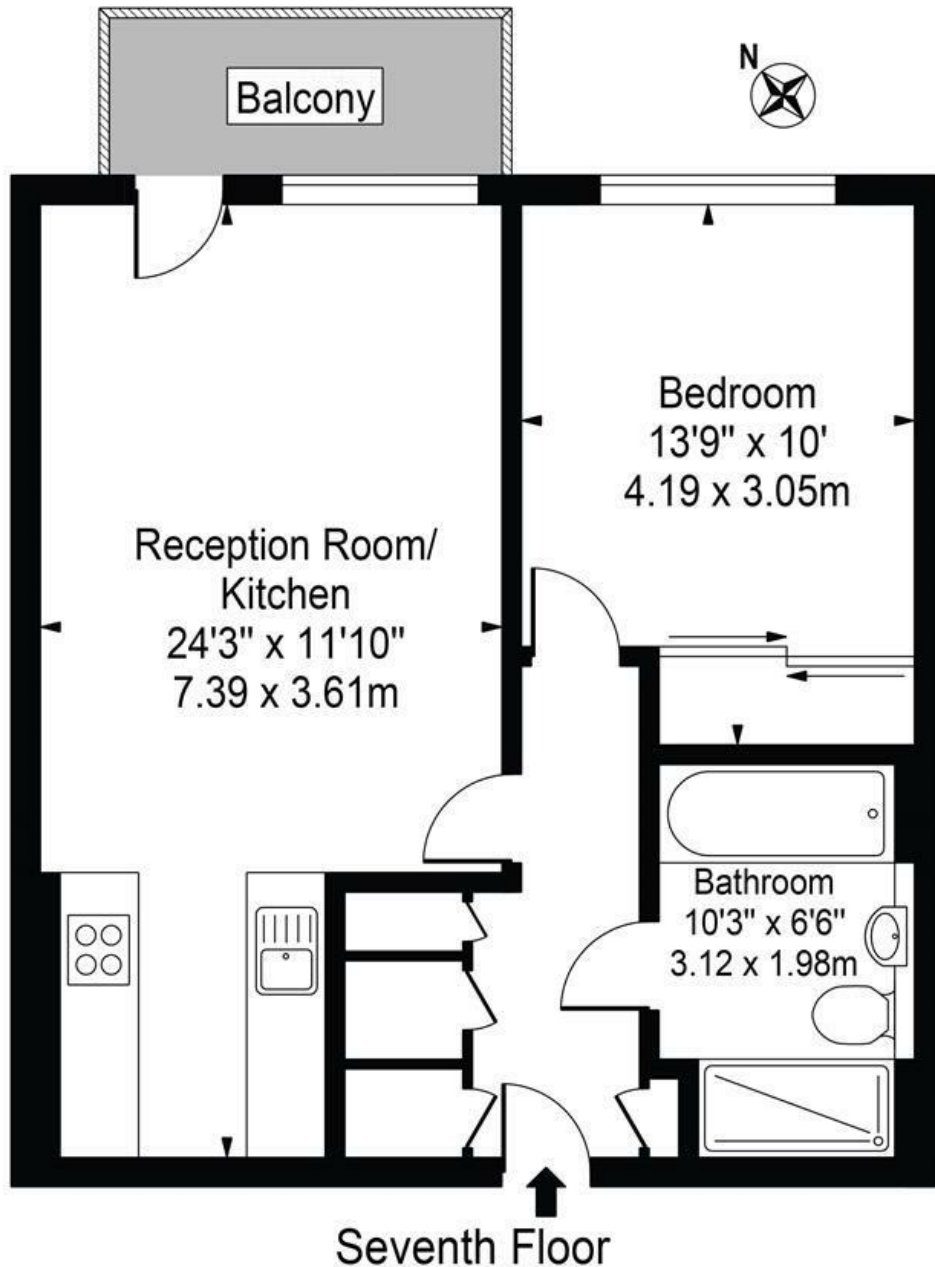
Onsite benefits include two grocery stores and a plethora of independent boutique shops and cafes on your doorstep.

Offers in excess of £425,000

**Alex &
Matteo**
ESTATE AGENTS

Nyland Court

Approx. Gross Internal Area 535 Sq Ft - 49.70 Sq M



For Illustration Purposes Only - Not To Scale

This floor plan should be used as a general outline for guidance only and does not constitute in whole or in part an offer or contract. Any intending purchaser or lessee should satisfy themselves by inspection, searches, enquiries and full survey as to the correctness of each statement. Any areas, measurements or distances quoted are approximate and should not be used to value a property or be the basis of any sale or let.

Energy Efficiency Rating		Current	Potential
Very energy efficient - lower running costs			
(92 plus) A			
(81-91) B		84	84
(69-80) C			
(55-68) D			
(39-54) E			
(21-38) F			
(1-20) G			
Not energy efficient - higher running costs			
England & Wales		EU Directive 2002/91/EC	